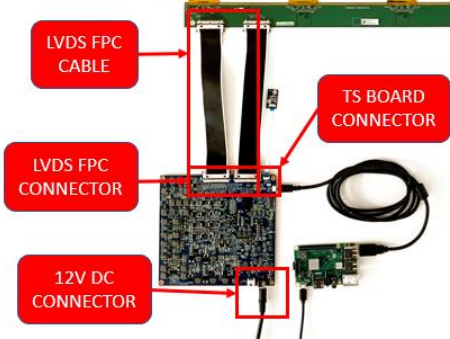




Quick start guide of Luvia EVK for 25.3" Kaleido 3 EPD

EVK Operating SOP

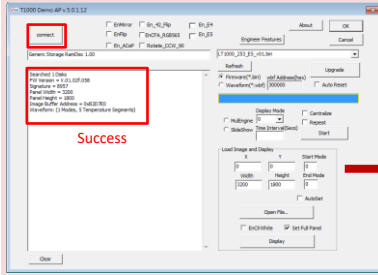
Demo Kit Hardware Description



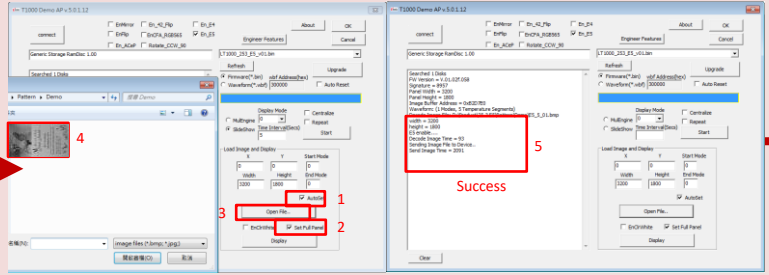
Connector	Function
12V DC CONNECTOR	DC 12V, for TCON power supply
LVDS FPC CONNECTOR	Connector for 25.3" Kaleido and TCON board
TS BOARD CONNECTOR	Connect to thermal sensor board via 10cm FPC

Operating Instructions

① Connect to Physical Drive



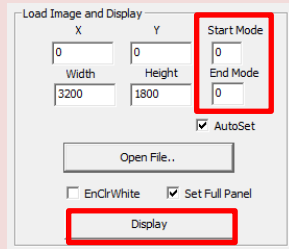
② Load image to L-T1000



- 1) 2) Select "AutoSet" and "Set Full Panel".
- 3) 4) Click "Open File.." to load the image.
- 5) Success load the image.

A Single Image Mode

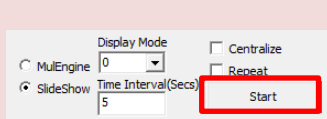
③ Display the image



click "Display"

B Slide Show Mode

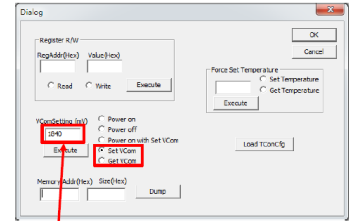
③ Run slideshow



click "Start"

Engineer Features Description

Set/Get VCOM



-1.84

Vcom values are marked on the PCB label